

Strong diamagnetic response in split-ring-resonator metamaterials: Numerical study and two-loop model

E. N. Economou,^{1,2} Th. Koschny,^{3,2} and C. M. Soukoulis^{3,2,4}¹Department of Physics, University of Crete, 71003 Heraklion, Crete, Greece²Institute of Electronic Structure and Laser (IESL)-Foundation for Research and Technology-Hellas (FORTH), 71110 Heraklion, Crete, Greece³Ames Laboratory and Department of Physics and Astronomy, Iowa State University, Ames, Iowa 50011, USA⁴Department of Materials Science and Technology, University of Crete, Heraklion, Crete 71409, Greece

(Received 14 January 2008; published 3 March 2008)

We demonstrate that there is a strong diamagnetic response of metamaterials, consisting of open or closed split-ring resonators (SRRs). Detailed numerical work shows that for densely packed SRRs, the magnetic permeability $\mu(\omega)$ does not approach unity, as expected for frequencies lower and higher than the resonance frequency ω_0 . Below ω_0 , $\mu(\omega)$ gives values ranging from 0.9 to 0.6 depending of the width of the metallic ring, while above ω_0 , $\mu(\omega)$ is close to 0.5. Closed rings have $\mu \approx 0.5$ over a wide frequency range independently of the width of the ring. A simple model that uses the inner and outer current loops of the SRRs can easily explain theoretically this strong diamagnetic response, which can be used in magnetic levitation.

DOI: 10.1103/PhysRevB.77.092401

PACS number(s): 75.20.-g, 78.20.Ci, 41.20.Jb, 73.20.Mf

Several types of regular materials exhibit diamagnetic behavior characterized by an induced magnetic moment opposite to the external magnetic field so that their magnetic susceptibility χ is negative. Most of the natural diamagnetic materials have very low values of χ , of the order of 10^{-6} . The largest known diamagnetic value of a natural material is that of pyrolytic graphite which is equal to -4.5×10^{-4} . A strong diamagnetic response is very important, since it can be used in magnetic levitation. There are two cases of strong diamagnetic response. One is that of the superconducting state which shows $\chi = -1$ (or weaker in the mixed state) practically over all frequencies. The other is that of magnetic metamaterials to be examined in this work.

Over the last seven years, artificial materials have been designed and fabricated consisting of an assembly of units (sometimes called magnetic “atoms”) which exhibit a resonant response to electromagnetic field of appropriate polarization driving thus the magnetic permeability $\mu = 1 + \chi$ to negative values for a narrow frequency range just above the resonance frequency.¹⁻³ Given the fact that the magnetic response is, in general, a weak v^2/c^2 effect,⁴ it is not unreasonable to expect that μ would approach unity away from the resonance. However, as it can be seen from Fig. 1, this is not the case. Unusually large values of $|\chi|$ appear leading to values of μ as low as 0.5. More specifically, there is a frequency regime below the resonance [Fig. 1(a)] extending over at least 2 orders of magnitude where μ stays clearly lower than one; the larger the width w of the ring (see Fig. 1), the smaller the value of μ is and the wider this frequency regime is. On the other side of the resonance, there is again a plateau where μ has a value of about 0.5 for the chosen values of the parameters. This value is independent of the width w , and it is practically equal to the value of μ appearing if the ring is closed [see Fig. 1(b) showing a constant μ clearly less than one over a very broad frequency range extending over $3\frac{1}{2}$ orders of magnitude]. We point out that the diamagnetic strength shown in Fig. 1(a) or 1(b) is comparable to that of the superconducting state.

While the resonance region has been studied extensively, the other diamagnetic regimes have received little attention.⁵⁻⁷ In this Brief Report, we focus on these regimes and we explain their main unexpected features. We start with the approach of Gorkunov *et al.*,⁸ according to which its

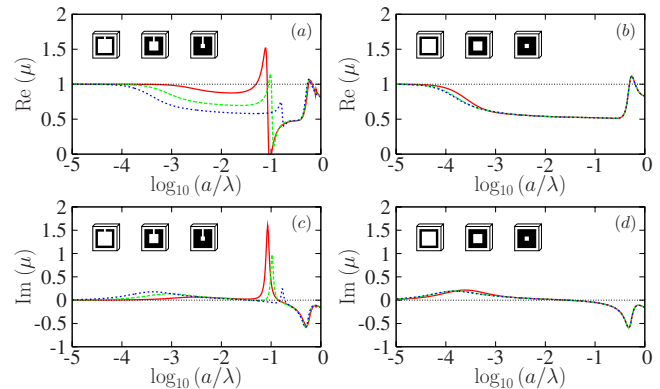


FIG. 1. (Color online) $\text{Re } \mu$ vs $\log_{10}(a/\lambda)$ obtained by simulations for a periodic assembly of (a) open or (b) closed square metallic rings. The corresponding $\text{Im } \mu$ vs $\log_{10}(a/\lambda)$ are shown in panels (c) and (d), respectively. The simulations have been done using the commercial software packet COMSOL MULTIPHYSICS, which is essentially a finite-element method frequency domain solver. The complex current distribution was obtained directly from the simulated field distributions and, averaged over the unit cell, gave the magnetization (this averaging produces unphysical results when the wavelength λ becomes smaller than the unit cell size as evidenced by $\text{Im } \mu < 0$). Using Eq. (4) together with the incident field H_0 , we found the effective permeability shown. Unit cell size is $a \times a \times a_{\perp} = 10 \times 10 \times 2 \mu\text{m}^3$. Size of the ring is $\ell \times \ell = 8 \times 8 \mu\text{m}^2$; its cross section is $d \times w$, where the depth $d = 400 \text{ nm}$ and the width w takes the values $1 \mu\text{m}$ (red, solid curve), $2 \mu\text{m}$ (green, dashed curve), and $3 \mu\text{m}$ (blue, dotted curve). The metal is the Drude-model gold with experimental values for the plasma frequency, $\omega_p = 2\pi \times 2184 \text{ THz}$, and collision frequency, $\omega_{\tau} = 2\pi \times 6.5 \text{ THz}$. (Ref. 9).

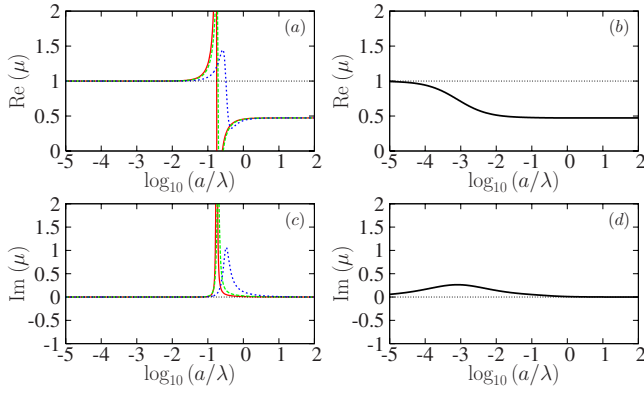


FIG. 2. (Color online) $\text{Re } \mu$ vs $\log_{10}(a/\lambda)$ according to Eq. (1) for (a) open rings for the values of the width $w=1 \mu\text{m}$ (red, solid curve), $2 \mu\text{m}$ (green, dashed curve), and $3 \mu\text{m}$ (blue, dotted curve) and for (b) closed rings of any width. The corresponding $\text{Im } \mu$ vs $\log_{10}(a/\lambda)$ is shown in (c) and (d), respectively. All parameters are as in Fig. 1.

inductance L , its capacitance C , and its resistance R characterize each open ring. For closed rings, there is no capacitance; the mutual inductances L_{nm} among the rings (which are periodically placed to form a lattice) are also taken into account. The final result for μ and for open rings is

$$\mu = 1 - \frac{B\omega^2}{\omega^2 - \Omega_m^2 + i\omega\Gamma_m}, \quad (1)$$

where $B = \mu_0 n A^2 Q^2 / L$, n is the concentration of rings, $n = 1/(a^2 a_\perp)$, A is the area of each ring, $A \approx (\ell - w)^2$, $Q^2/L = (L_{\text{eff}} + \frac{1}{3}\mu_0 n A^2)^{-1}$, $L_{\text{eff}} = L + \sum_m L_{nm}$, $\Omega_m^2 = Q^2 \omega_0^2$, $\Gamma_m = Q^2 \gamma_0$, $\omega_0 = 1/\sqrt{LC}$, and $\gamma_0 = R/L$. For closed rings, $\Omega_m = 0$. Notice that $\mu_0 n A^2 = (\mu_0 A/a_\perp) f_1$, where $\mu_0 A/a_\perp$ is L_{eff} in the solenoid limit and $f_1 = A/a^2$ is the two dimensional filling factor. Thus, in the limit of close-packed rings,

$$B \approx \frac{f_1}{f_2 + f_1/3}, \quad (2)$$

where f_2 is smaller than but close to one.

In Fig. 2, we plot μ vs $\log_{10}(a/\lambda)$ according to Eq. (1). We have taken into account that R and L (to a lesser degree) depend on ω because of the skin effect.⁴ We see that the resonance region as well as the plateau above are reproduced fairly well, although the resonance is stronger and sharper than in Fig. 1(a). Similarly, the closed ring result is in good agreement with the simulations data of Fig. 1(b) except of the final high frequency rise toward one, which we attribute to the fact that at this high frequency, the wavelength λ_m in the medium is comparable to twice the unit cell size; then, the uniform field assumption, on which the retrieval of μ from the simulation and Eq. (1) is based, breaks down.¹⁰

On the other hand, Eq. (1) fails to reproduce the diamagnetic response below the resonance for the open ring case. To understand the reason behind this failure, we return to the simulations and we analyze the current distribution, as shown in Fig. 3. In case (a), below the resonance, the opposite flowing currents at the two edges induce a magnetic field

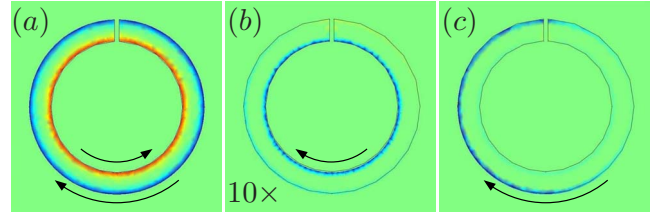


FIG. 3. (Color online) Current distribution in the split-ring-resonator ring (the color or gray level is the azimuthal current density, the arrows indicate current direction at the edges) for the three regimes shown in Fig. 1 when the external magnetic field is normal to the plane of the rings and pointing out of it: (a) In the diamagnetic regime below resonance, the current is confined near the outer and the inner edges flowing in the opposite directions enclosing the metal filled area of the ring trace; (b) at resonance, the current is mainly confined near the inner surface; (c) above resonance, the current flows clockwise and essentially at the outer edges of the metallic ring.

which cancels the external magnetic field inside the metallic wire. The wider the wire, the more extensive the diamagnetic volume is and the lower μ is. At resonance [case (b)], the strong clockwise current at the inner edge induces a strong field which in the inner area of the ring cancels or dominates over the external field producing thus the possibility of negative μ . Finally, in the plateau above the resonance, the current flows clockwise near the outer edge inducing a field which cancels the external field over the area enclosed by the outer edge of the ring; this is the reason that the value of μ in this regime is independent of the metallic width w (assuming constant ℓ) and equal to the closed ring value, since in the latter case, the current flow is as in case (c) over the entire diamagnetic regime. The asymmetry of the circular current in case (c) is due to the superposition of growing linear currents caused by a electric cut-wire resonance at higher frequency.

To model this more complicated behavior of the open ring, we introduce a two-loop representation of it sharing the single capacitance of the gap as in Fig. 4. By defining the effective inductances $\tilde{L}_1 = L_1 + \sum_m L_{1, nm}$, $\tilde{L}_2 = L_2 + \sum_m L_{2, nm}$, and $\tilde{L}_{12} = \tilde{L}_{21} = L_{12} + \sum_m L_{12, nm}$, we find using Kirchoff's circuit equations the following matrix relation connecting the currents I_1 and I_2 in each loop to the external magnetic field H_0 ,

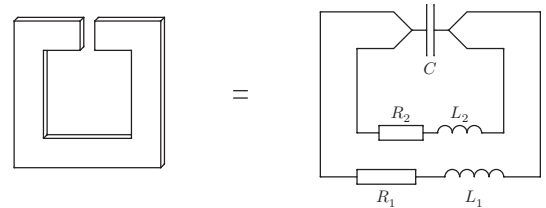


FIG. 4. Equivalent circuit for an open ring. Loop 1 (2) represents the current path roughly one skin depth wide along the outer (inner) edge of the ring. The two loops have a mutual inductance $L_{12} = L_{21}$.

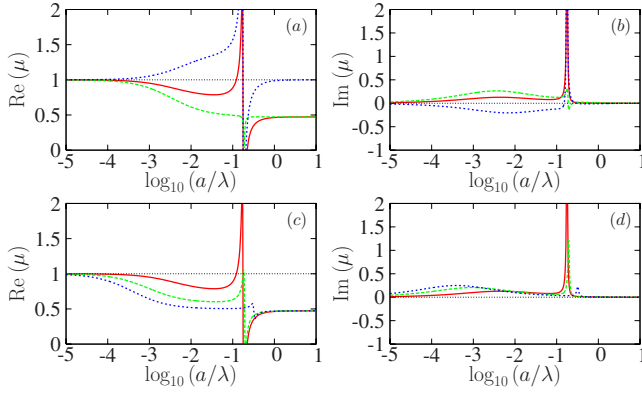


FIG. 5. (Color online) (a) $\text{Re } \mu$ vs $\log_{10}(a/\lambda)$ for the open SRR rings with $w=1 \mu\text{m}$ (red, solid curve) together with the contribution of inner (blue, dotted curve) and the outer (green, dashed curve) edges; (b) shows the corresponding $\text{Im } \mu$ vs $\log_{10}(a/\lambda)$ (red, solid curve) together with the contribution of inner (blue, dotted curve) and the outer (green, dashed curve) edges. (c) and (d) show $\text{Re } \mu$ vs $\log_{10}(a/\lambda)$ and $\text{Im } \mu$ vs $\log_{10}(a/\lambda)$, respectively, for the three cases discussed in Fig. 1(a) with ring widths of $1 \mu\text{m}$ (red, solid curve), $2 \mu\text{m}$ (green, dashed curve), and $3 \mu\text{m}$ (blue, dotted curve). These results were obtained according to Eqs. (3) and (4).

$$\begin{pmatrix} Z_{11} & Z_{12} \\ Z_{21} & Z_{22} \end{pmatrix} \begin{pmatrix} I_1 \\ I_2 \end{pmatrix} = i\omega\mu_0 H_0 \begin{pmatrix} A_1 \\ A_2 \end{pmatrix}, \quad (3)$$

where $Z_{ii} = -i\omega\tilde{L}_i - (i\omega C)^{-1} + R_i$, $i=1,2$, $Z_{12}=Z_{21} = -i\omega\tilde{L}_{12} - (i\omega C)^{-1}$, and $A_1(A_2)$ is the area enclosed by the outer (inner) edge of the ring. The permeability μ is given, following Ref. 6, by

$$\mu = \frac{1 + \frac{2M}{3H_0}}{1 - \frac{1M}{3H_0}}, \quad (4)$$

where the average magnetization M is equal to $n(A_1 I_1 + A_2 I_2)$. In what follows, we shall employ the solenoid approximation (which is good for close-packed rings, i.e., small a_{\perp}) in order to avoid the tedious lattice sums involved in the definition of \tilde{L}_1 , \tilde{L}_2 , and \tilde{L}_{12} , which just renormalize parameters but do not qualitatively alter the physical behavior. According to this approximation, we have $\tilde{L}_1 \approx \mu_0 A_1 / a_{\perp}$, $\tilde{L}_2 \approx \mu_0 A_2 / a_{\perp}$, and, $\tilde{L}_{12} = \tilde{L}_{21}$, $\tilde{L}_{12} \approx \mu_0 A_2 / a_{\perp}$.

In Figs. 5(a) and 5(b), we plot $\mu(\omega)$ together with the corresponding contributions from the outer and inner loops, while in Figs. 5(c) and 5(d), we plot $\mu(\omega)$ for the three cases shown in Fig. 1(a) according to Eqs. (3) and (4). We see from Fig. 5(a) that the diamagnetic contribution below resonance is coming from the outer loop, which prevails over the contribution of the inner loop, which is paramagnetic. At resonance, the inner loop dominates, while the outer loop gives a negative peak there. Finally, above resonance, the outer loop gives a constant diamagnetic contribution, while the inner

loop contribution approaches smoothly the value $\mu=1$. The $\text{Im } \mu(\omega)$ [Fig. 5(b)] confirms the predominance of the inner loop at the resonance frequency. The contribution of the inner loop to $\text{Im } \mu(\omega)$ in the diamagnetic region below resonance is negative, while the total $\text{Im } \mu(\omega)$ is, of course, positive. This indicates that the outer loop feeds the inner loop with energy there. For comparison, we calculated the total $\mu(\omega)$ within the two-loop model for open rings and for the three cases shown in Fig. 1(a). The result is shown in Fig. 5(c), and it is in good agreement with the simulations presented in Fig. 1(a). We calculated also, within the two-loop model, $\mu(\omega)$ for closed rings, and we found that it is constant and negative and equal to the high frequency asymptotic value for open rings; this result is not plotted, since it practically coincides with those in Figs. 1(b) and 2(b). Thus, the two-loop model reproduces the μ vs ω dependence, as determined by FEMLAB simulation, as well as all the features of the current distributions in the various regimes, and provides a clear explanation for the complicated diamagnetic behavior of the open rings.

In conclusion, the present work shows that there are five frequency regions in the magnetic response of open rings. This behavior can be understood in terms of the outer and the inner current loops of each ring proposed here: The low frequency regime, $\omega < R/L$, exhibits practically no magnetic response, $\mu=1$, because of the resistive damping as expected for most materials. The second frequency regime, $R/L < \omega < 1/\sqrt{LC}$, exhibits an unusually strong diamagnetic behavior (even for metal volume filling ratios as low as 10%) which is due to the outer current loop, while the inner one makes a paramagnetic contribution (the two currents are connected along the gap); the net result depends on the difference $A_1 - A_2$ of the areas enclosed by these two loops. The third regime, $\omega \approx 1/\sqrt{LC}$, is the resonance region, which is dominated by the inner loop; this presents a design challenge, since what creates a strong diamagnetic background below the resonance frequency, namely, a small area inner loop, makes the resonance weak. The fourth regime, $1/\sqrt{LC} < \omega < \pi c/a$, shows again a very strong diamagnetic response and depends only on the outer loop, being proportional to A_1 . Finally, in the regime $\pi c/a < \omega$, the assumption of the wavelength λ_m in the medium being much larger than the lattice constant a breaks down and both the averaging procedure employed in the simulations and the description in terms of a simple effective electric circuit fail.

Work at the Ames Laboratory was supported by the Department of Energy (Basic Energy Sciences) under Contract No. DE-AC02-07CH11358. This work was partially supported by the AFOSR under MURI (Grant No. FA9550-06-1-0337), by DARPA (Contract No. MDA-972-01-2-0016), by Department of the Navy, Office of Naval Research (Award No. N00014-07-1-0359), by EU project, Molecular Imaging (LSHG-CT-2003-503259), by Metamorphose and PHOREMOST, and by Greek Ministry of Education Pythagoras project.

- ¹D. R. Smith, J. B. Pendry, and M. C. Wiltshire, *Science* **305**, 788 (2004).
- ²C. M. Soukoulis, *Opt. Photonics News* **17**, 16 (2006); C. M. Soukoulis, M. Kafesaki, and E. N. Economou, *Adv. Mater. (Weinheim, Ger.)* **18**, 1941 (2006).
- ³C. M. Soukoulis, S. Linden, and M. Wegener, *Science* **315**, 47 (2007); V. M. Shalaev, *Nat. Photonics* **1**, 41 (2007).
- ⁴L. D. Landau, E. M. Lifshitz, and L. P. Pitaevskii, *Electrodynamics of Continuous Media*, 2nd ed. (Pergamon, Oxford, 1984).
- ⁵C. M. Soukoulis, Th. Koschny, J. Zhou, M. Kafesaki, and E. N. Economou, *Phys. Status Solidi B* **244**, 1181 (2007).
- ⁶Xinhua Hu, C. T. Chan, Jian Zi, Ming Li, and Kai-Ming Ho, *Phys. Rev. Lett.* **96**, 223901 (2006).
- ⁷B. Wood and J. B. Pendry, *J. Phys.: Condens. Matter* **19**, 076208 (2007).
- ⁸M. Gorkunov, M. Lapine, E. Shamonina, and K. H. Ringhofer, *Eur. Phys. J. B* **28**, 263 (2002).
- ⁹M. A. Ordal, L. L. Long, R. J. Bell, S. E. Bell, R. R. Bell, R. W. Alexander, Jr., and C. A. Ward, *Appl. Opt.* **24**, 4493 (1985).
- ¹⁰Th. Koschny, P. Markoš, E. N. Economou, D. R. Smith, D. C. Vier, and C. M. Soukoulis, *Phys. Rev. B* **71**, 245105 (2005).